



EMI/RFI Filter with excellent attenuation for industrial applications

Datasheet 3/2019

APPROVALS:



FIN50.(005 - 016).F

FEATURES

- Rated current from 5 to 24A
- Low leakage current
- Panel mounting

BENEFITS

- 5 Year warranty
- High differential and common mode attenuation
- High performance

MARKETS

- Packaging machinery
- Renewable energy
- CNC machinery
- Printing machinery

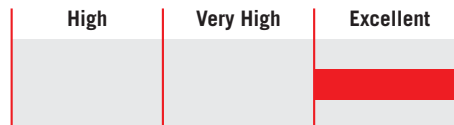
ORDERING CODE

FIN50	.016	.F
Model	Current (A)	Connection
		F = Faston
		M = Terminal block

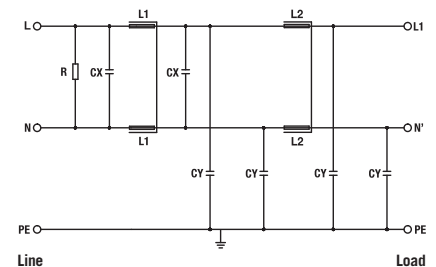


FIN50.024.M

ATTENUATION INDICATOR



ELECTRIC DIAGRAM



TECHNICAL SPECIFICATIONS

Nominal voltage	0 / 250 Vac
Frequency	50 – 60 Hz
Rated current	5 to 24A
Potential test voltage phase to phase	1750 Vdc (2 sec.)
Potential test voltage phase to ground	2150 Vdc (2 sec.)
Leakage current normal conditions	< 2.2 mA *
Leakage current worst conditions	< 7 mA
IP Protection	IPO0 up to 16A – over IP20
Overload capability	4 x Rated current (Switch ON) 2 x In 10 seconds 1.5 In for 10 minutes
Climatic class	-40 / +85° C
MTBF at 40°C	250.000 Hrs

* Voltage 230 Vac phase to ground 50 Hz / 40°C

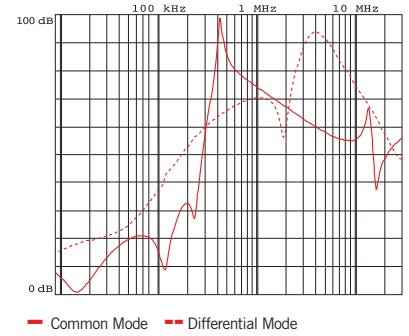
ELECTRICAL CHARACTERISTICS

FIN50	Rated Current 40°C	Rated Current 50°C	Power Loss (W)
.005.F	5	3	2
.010.F	10	7	2.7
.016.F	16	12	5
.024.M	24	20	6

CONNECTIONS

LINE			PE
Solid Cable (mm ²)	Stranded Cable (mm ²)	Terminal Block Torque (Nm)	Torque (Nm)
0.2 - 6	0.5 - 4	-	-
0.2 - 6	0.5 - 4	-	-
0.2 - 6	0.5 - 4	-	-
0.2 - 6	0.5 - 4	0.8	0.8

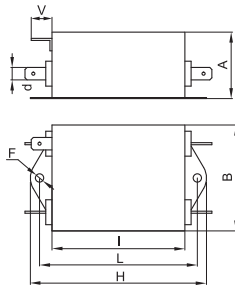
TYPICAL ATTENUATION



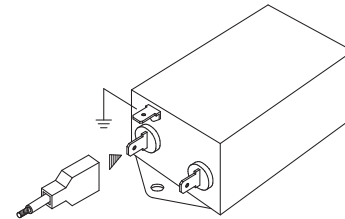
MECHANICAL DIMENSIONS mm

FIN50	A	B	V	F	H	I	L	N	d	Weight Kg.	Case
.005.F	39	51	13.5	4.5	84.5	63.5	74.5	-	6.5	0.20	1
.010.F	49.5	51	13.5	4.5	97	75.5	86.5	-	6.5	0.35	2
.016.F	45	84.5	13.5	4.5	105	99.5	51	95	6.5	0.70	3
.024.M	49.5	84.5	13	4.5	105	99.5	51	95	-	0.93	4

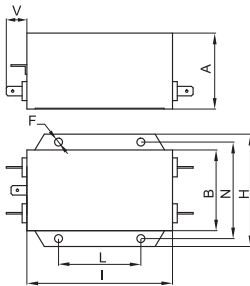
CASE 1, 2



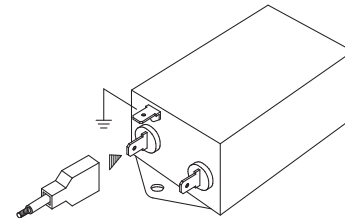
ASSEMBLY CONNECTION "F"



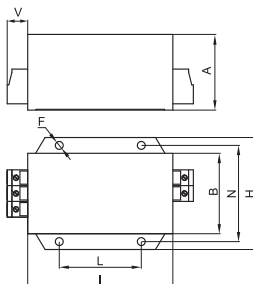
CASE 3



ASSEMBLY CONNECTION "F"



CASE 4



ASSEMBLY CONNECTION "M"

