



EMI/RFI Filter with very high attenuation for industrial applications

Datasheet 3/2019



FIN1740ESM.(010 – 180).M

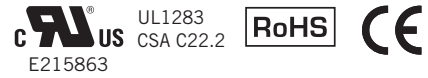
FEATURES

- Rated current from 10 to 180A
- Very high differential and common mode attenuation
- Low leakage current

MARKETS

- Conveyors
- Automated machinery
- 3D printers
- Medical equipment

APPROVALS:



SCCR by UL508A

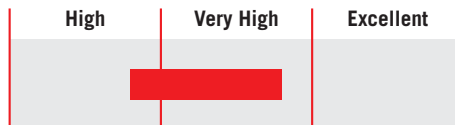
BENEFITS

- 5 Year warranty
- Suitable for medical applications
- Compact design

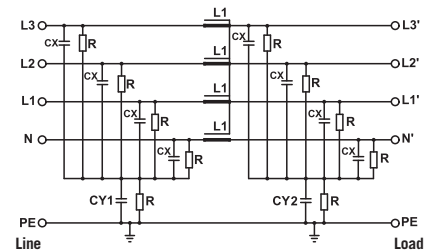
ORDERING CODE

FIN 1740ESM .072 .M
 Model Current (A) Connection
 M = Terminal block

ATTENUATION INDICATOR



ELECTRIC DIAGRAM



TECHNICAL SPECIFICATIONS

| | |
|--|---|
| Nominal voltage | 0 / 500 Vac |
| Frequency | 50 – 60 Hz |
| Rated current | 10 to 180A |
| Potential test voltage phase to phase | 2300 Vdc (2 sec.) |
| Potential test voltage phase to ground | 3100 Vdc (2 sec.) |
| Leakage current normal conditions | < 3 mA * |
| Leakage current worst conditions | < 15 mA |
| IP Protection | IP20 |
| Overload capability | 4 x Rated current (Switch ON) 2 x In 10 seconds 1.5 In for 10 minutes |
| Climatic class | -40 / +85° C |
| MTBF at 40°C | 250.000 Hrs |

* Voltage 230 Vac phase to ground 50 Hz / 40°C

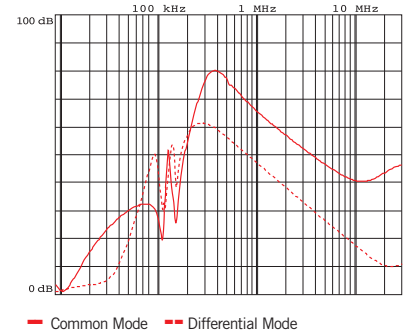
ELECTRICAL CHARACTERISTICS

| FIN1740ESM | Rated Current 40°C | Rated Current 50°C | Power Loss (W) |
|------------|--------------------|--------------------|----------------|
| .010.M | 10 | 9 | 5 |
| .018.M | 18 | 16 | 5 |
| .036.M | 36 | 32 | 18 |
| .072.M | 72 | 64 | 40 |
| .100.M | 100 | 90 | 102 |
| .135.M | 135 | 120 | 96 |
| .180.M | 180 | 160 | 98 |

CONNECTIONS

| LINE | | | PE | |
|--------------------------------|-----------------------------------|----------------------|--------|-------------|
| Solid Cable (mm ²) | Stranded Cable (mm ²) | Terminal Torque (Nm) | d (mm) | Torque (Nm) |
| 0.2 - 10 | 0.2 - 6 | 1.2 | M6 | 6 |
| 0.2 - 10 | 0.2 - 6 | 1.2 | M6 | 6 |
| 0.2 - 10 | 0.2 - 6 | 1.2 | M6 | 6 |
| 0.5 - 16 | 0.5 - 10 | 1.8 | M6 | 6 |
| 4 - 25 | 6 - 35 | 4.5 | M10 | 18 |
| 10 - 50 | 10 - 50 | 4 | M10 | 18 |
| 35 - 95 | 35 - 95 | 20 | M10 | 18 |

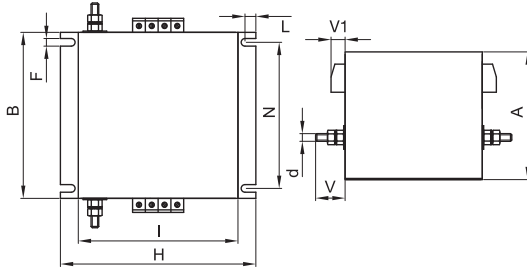
TYPICAL ATTENUATION



MECHANICAL DIMENSIONS mm

| FIN1740ESM | A | B | V | V1 | F | H | I | L | N | d | Weight Kg. | Case |
|------------|-----|-----|------|------|-----|-----|-----|-----|----|-----|------------|------|
| .010.M | 100 | 130 | 22.5 | 16 | 6.5 | 153 | 125 | 8.5 | 90 | M6 | 1 | 1 |
| .018.M | 100 | 130 | 22.5 | 16 | 6.5 | 153 | 125 | 8.5 | 90 | M6 | 1 | 1 |
| .036.M | 100 | 130 | 22.5 | 16 | 6.5 | 153 | 125 | 8.5 | 90 | M6 | 1.1 | 1 |
| .072.M | 125 | 118 | 22.5 | 32.5 | 6.5 | 153 | 128 | 8.5 | 50 | M6 | 1.6 | 1 |
| .100.M | 140 | 180 | 30 | 39 | 6.5 | 170 | 140 | 8.5 | 65 | M10 | 3.4 | 1 |
| .135.M | 140 | 180 | 30 | 43 | 6.5 | 170 | 140 | 8.5 | 65 | M10 | 4.5 | 1 |
| .180.M | 160 | 200 | 30 | 51.5 | 6.5 | 170 | 140 | 8.5 | 75 | M10 | 4.8 | 1 |

CASE 1



ASSEMBLY CONNECTION "M"

