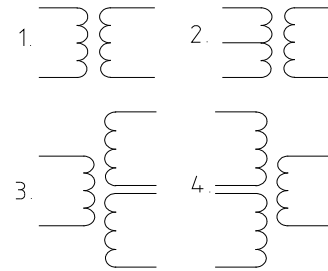



**ELECTRIC CHARACTERISTICS**

Rated frequency	50/60 Hz
Electric strength	4 kV
Insulation class	B
Max. ambient temperature	70 °C


**ELECTRIC DIAGRAM**


EI 60	Max. output power (VA)	PRI (V)	SEC (V)	Short circuit protection
-13/...	20	100-400	3-26	Non-inherently short circuit proof
-21/...	25	230	3-230	Not short circuit proof
-31F/...	25	110-250	3-230	Non-inherently short circuit proof
-33F/...	24	115-460	3-24	Non-inherently short circuit proof
-34F/...	31	230	3-24	Non-inherently short circuit proof
-35F/...	30	230	3-24	Non-inherently short circuit proof
-41F/...	30	230-400	3-210	Non-inherently short circuit proof

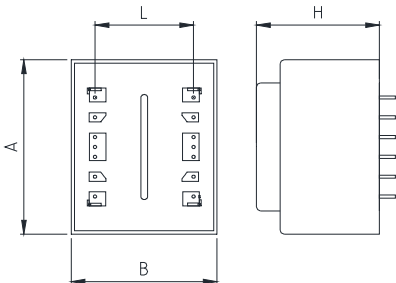
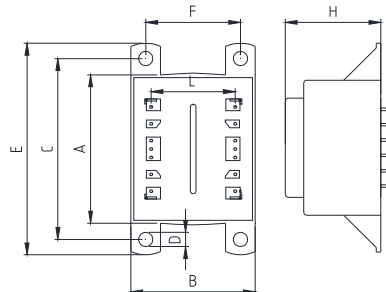
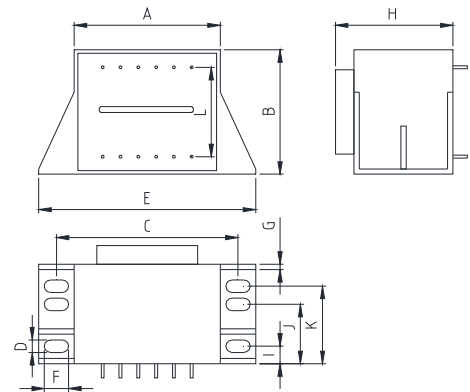
Approved to EN 61558  
Safety class II

**CONNECTION**

Solder pins Ø 0,8 mm

**MECHANICAL DIMENSIONS (mm)**

EI 60	A	B	C	D	E	F	G	H	I	J	K	L	Weight (g)	Case
-13/...	63,6	53,6	72,5	4,2	81,2	43,5	-	47,8	-	-	-	32,5	650	KK
-21/...	66,2	53,6	75	4,2	88	9	2	48	12,3	25,7	-	32,5	650	V
-31/...	66,2	53,6	75	5,2	88	9	2	52,3	12,3	25,7	-	32,5	785	V
-32/...	63,6	53,6	-	-	-	-	-	52,3	-	-	-	32,5	785	O
-33/...	63,6	53,6	72,5	4,2	81,2	43,5	-	52,3	-	-	-	32,5	785	KK
-34/...	63,6	53,6	-	-	-	-	-	57,3	-	-	-	32,5	785	O
-35/...	63,6	53,6	72,5	4,2	81,2	43,5	-	57,3	-	-	-	32,5	806	KK
-41/...	66,2	53,6	75	5,2	88	9	2	57,3	15,5	29	40	32,5	806	V

**CASE "O"**

**CASE "KK"**

**CASE "V"**


Further versions, prim. or sec. voltages, pin configurations on request.