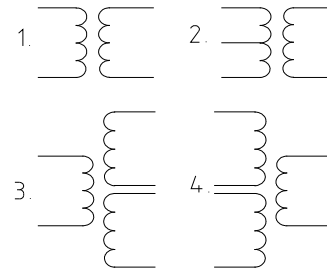



ELECTRIC CHARACTERISTICS

Rated frequency	50/60 Hz
Electric strength	4 kV
Insulation class	B
Max. ambient temperature	70°C


ELECTRIC DIAGRAM


UI 39	Max. output power (VA)	PRI (V)	SEC (V)	Short circuit protection
-12F/...	14	115-230	3-24	Non-inherently short circuit proof
-15G/...	32	115-230	3-24	Inherently short circuit proof

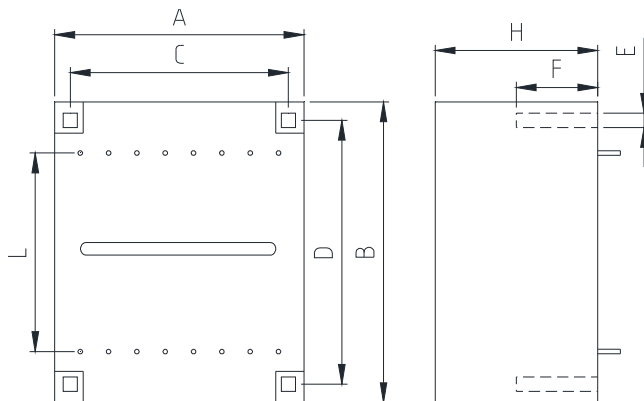
Approved to EN 61558
Safety class II

CONNECTION

Solder pins Ø 0,8 mm

MECHANICAL DIMENSIONS (mm)

UI 39	A	B	C	D	E	F	H	L	Weight (g)	Case
-12/...	57	67,8	50	62,5	2,5	24,4	24,4	45	330	F
-15/...	57,3	68,2	50	62,5	2,4	36	36	45	560	F

CASE "F"


Further versions, prim. or sec. voltages, pin configurations on request.