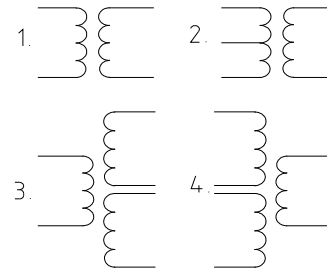



ELECTRIC CHARACTERISTICS

Rated frequency	50/60 Hz
Electric strength	4 kV
Insulation class	B
Max. ambient temperature	70 °C



UI 30	Max. output power (VA)	PRI (V)	SEC (V)	Short circuit protection
-04F/...	10	230	3-24	Non-inherently short circuit proof
-11/...	3	115-250	3-24	Inherently short circuit proof
-14F/...	5	22-230	3-24	Non-inherently short circuit proof

ELECTRIC DIAGRAM


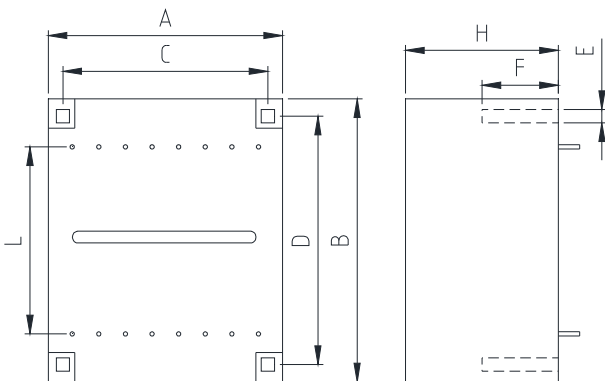
Approved to EN 61558
Safety class II

CONNECTION

Solder pins Ø 0,8 mm

MECHANICAL DIMENSIONS (mm)

UI 30	A	B	C	D	E	F	H	L	Weight (g)	Case
-04F/...	44	53	37,5	47,5	2,5	8	28,5	35	260	U
-11/...	44	53	37,5	47,5	2,5	8	17,1	35	125	U
-14F/...	44	53	37,5	47,5	2,5	8	28,5	35	260	U

CASE "U"


Further versions, prim. or sec. voltages, pin configurations on request.