



ELECTRIC CHARACTERISTICS

Nominal voltage	0/480 V _{Ac} - 50/60 Hz
Phase to phase test voltage	2200 V _{Dc} (2 s)
Phase to ground test voltage	2900 V _{Dc} (2 s)
Climatic class	- 40 / +85 °C

RoHS

UL1283
CSA C22.2
E215863

FIN15	Rated Current 40°C	ΣCx (nF) $\pm 5\%$	Cy (nF) $\pm 5\%$	L1 (mH) $\pm 10\%$	Power Loss (W)
.003.M	3	136	22	2.2	1.5
.006.M	6	136	22	2.2	2.1
.010.M	10	136	22	2.1	2.8
.016.M	16	136	22	2.1	3.2
.020.M	20	136	22	2.0	4

Total leakage current at 230 V phase to ground 50 Hz / 40°C
 Nominal <1mA
 Worst condition <3mA

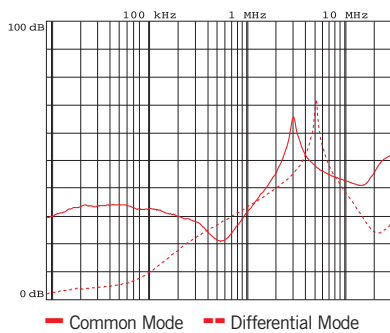
MECHANICAL DIMENSIONS (mm)

FIN15	A	B	H	N	Weight Kg	Case
.003.M	65	85	39	11	0.320	1
.006.M	65	85	39	11	0.320	1
.010.M	65	85	39	11	0.320	1
.016.M	65	85	39	11	0.320	1
.020.M	65	85	39	11	0.320	1

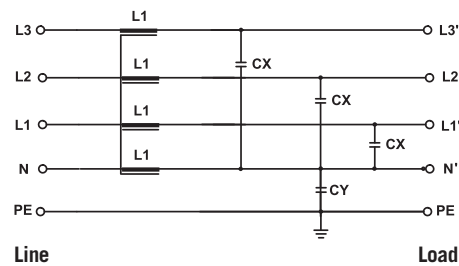
CONNECTION

Rigid Cable (mm ²)	Flexible Cable (mm ²)	Torque (Nm)
0.2 - 6	0.2 - 4	0.8
0.2 - 6	0.2 - 4	0.8
0.2 - 6	0.2 - 4	0.8
0.2 - 6	0.5 - 4	0.8
0.2 - 6	0.5 - 4	0.8

TYPICAL ATTENUATION



ELECTRIC DIAGRAM



CASE 1

