



ELECTRIC CHARACTERISTICS

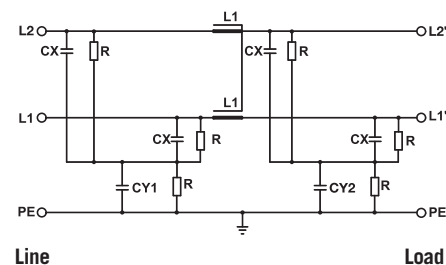
Nominal voltage	0/1000 V _{DC} - 0/700 V _{AC} - 50/60 Hz
Phase to phase test voltage	3100 V _{DC} (2 s)
Phase to ground test voltage	3400 V _{DC} (2 s)
Climatic class	- 40 / +85 °C

RoHS

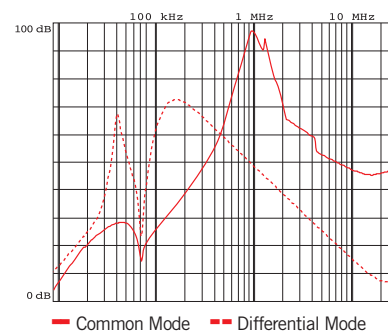
UL1283
CSA C22.2
E215863

FIN1520	Rated Current 40°C (50°C)	ΣCx (μF) $\pm 5\%$	Cy1 (nF) $\pm 5\%$	Cy2 (nF) $\pm 10\%$	L1 (mH) $\pm 10\%$	Power Loss (W)
.005.V	7 (5)	8.8	1000	1000	7	5
.010.V	12 (10)	8.8	1000	1000	5	7
.016.V	18 (16)	40	1000	1000	2	14
.030.V	34 (30)	40	1000	1000	2	11
.050.V	55 (50)	40	1000	1000	2	10
.080.V	85 (80)	40	1000	1000	1.8	39
.100.V	110 (100)	40	1000	1000	1.5	45
.130.V	134 (130)	40	1000	1000	1.3	49
.150.V	160 (150)	40	1000	1000	1.3	69
.180.V	185 (180)	40	1000	1000	0.9	77
.200.V	210 (200)	40	1000	1000	0.9	85
.250.V	272 (250)	40	1000	1000	0.7	87
.280.V	297 (280)	40	1000	1000	0.7	77
.280.B	330 (320)	40	1000	1000	0.7	76
.320.B	330 (320)	40	1000	1000	0.7	77
.360.B	390 (360)	40	1000	1000	0.6	98
.400.B	435 (400)	40	1000	1000	0.6	102
.500.B	545 (500)	40	1000	1000	0.55	96
.600.B	654 (600)	40	1000	1000	0.55	102
.750.B	800 (750)	40	1000	1000	0.5	88
.900.B	940 (900)	40	1000	1000	0.5	72
.1000.B	1050 (1000)	40	1000	1000	0.45	102
.1250.B	1290 (1250)	40	1000	1000	0.45	96
.1500.B	1550 (1500)	40	1000	1000	0.4	108
.1600.B	1650 (1600)	40	1000	1000	0.4	115
.1750.B	1800 (1750)	40	1000	1000	0.4	120
.2000.B	2040 (2000)	40	1000	1000	0.38	122
.2250.B	2290 (2250)	40	1000	1000	0.38	127
.2500.B	2535 (2500)	40	1000	1000	0.38	140
.3000.B	3050 (3000)	40	1000	1000	0.38	150

ELECTRIC DIAGRAM



TYPICAL ATTENUATION



Total leakage current at 230 V phase to ground 50 Hz / 40°C

Nominal <10mA
Worst condition <80mA

Vertical bus-bar connections available upon request

