



ELECTRIC CHARACTERISTICS

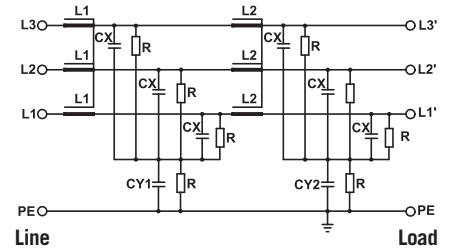
Nominal voltage	0/500 V _{Ac} - 50/60 Hz
Phase to phase test voltage	2300 V _{Dc} (2 s)
Phase to ground test voltage	3100 V _{Dc} (2 s)
Climatic class	- 40 / +85 °C

RoHS

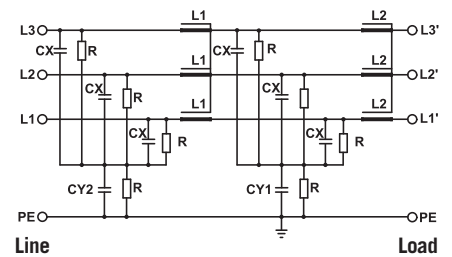
UL1283
CSA C22.2
E215863

FIN1700E FIN1700EG	Rated Current 40°C (50°C)	ΣCx (μF) ± 5%	Cy1 (nF) ± 5%	Cy2 (nF) ± 5%	L1 (mH) ± 10%	L2 (mH) ± 10%	Power Loss (W)
.007.M	7 (6)	20	100	100	1.5	1.5	8
.013.M	13 (12)	20	100	100	1.5	1.5	12
.018.M	18 (16)	20	100	100	1.4	1.4	15
.027.M	27 (25)	20	100	100	1.3	1.3	20
.034.M	34 (32)	20	100	100	1.2	1.2	32
.040.M	40 (36)	20	100	100	1.1	1.1	23
.055.M	55 (50)	20	100	100	1.1	1.1	42
.070.M	70 (64)	20	100	100	1	1	55
.100.M	100 (90)	20	100	100	1	1	60
.110.M	110 (100)	20	100	100	0.9	0.9	90
.130.M	130 (120)	20	100	100	0.8	0.8	98
.150.M	150 (135)	20	100	100	0.7	0.7	103
.200.M	200 (180)	20	100	100	0.7	0.7	115
.230.M	230 (210)	20	100	100	0.6	0.7	120

FIN1700E ELECTRIC DIAGRAM



FIN1700EG ELECTRIC DIAGRAM



Total leakage current at 230 V phase to ground 50 Hz / 40°C

Nominal <3mA
Worst condition <15mA

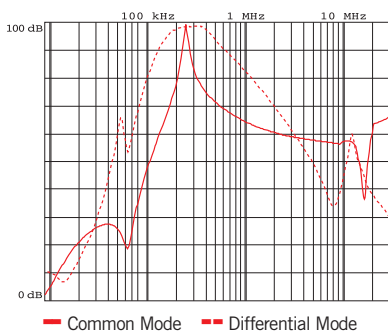
MECHANICAL DIMENSIONS (mm)

FIN1700E FIN1700EG	A	B	V	V1	F	H	I	L	N	d	Weight Kg
.007.M	140	50	19	15	6	226	200	7	28	M6	1.7
.013.M	140	50	19	15	6	226	200	7	28	M6	1.7
.018.M	140	50	19	15	6	226	200	7	28	M6	1.7
.027.M	140	50	19	15	6	226	200	7	28	M6	1.7
.034.M	140	50	19	15	6	226	200	7	28	M6	1.7
.040.M	140	50	19	15	6	226	200	7	28	M6	1.7
.055.M	177	70	19	25	6	295	265	8	44	M6	3.7
.070.M	177	70	19	33	6	295	265	8	44	M6	5.2
.100.M	205	80	28.5	38	8	390	340	12	53	M10	6.5
.110.M	205	80	28.5	38	8	390	340	12	53	M10	6.5
.130.M	205	80	28.5	43	8	390	340	12	53	M10	7.1
.150.M	205	80	28.5	43	8	390	340	12	53	M10	7.1
.200.M	220	105	28.5	50	8	420	370	12	78	M10	8
.230.M	220	105	28.5	50	8	420	370	12	78	M10	8

CONNECTION

Rigid Cable (mm ²)	Flexible Cable (mm ²)	Torque (Nm)
0.2 - 10	0.2 - 6	1.2
0.2 - 10	0.2 - 6	1.2
0.2 - 10	0.2 - 6	1.2
0.2 - 10	0.2 - 6	1.2
0.2 - 10	0.2 - 6	1.2
0.2 - 10	0.2 - 6	1.2
0.2 - 10	0.2 - 6	1.2
0.5 - 16	0.5 - 10	1.8
0.5 - 16	0.5 - 10	1.8
4 - 25	6 - 35	4.5
4 - 25	6 - 35	4.5
10 - 50	10 - 50	4
10 - 50	10 - 50	4
35 - 95	35 - 95	20
35 - 95	35 - 95	20

TYPICAL ATTENUATION



CASE

