



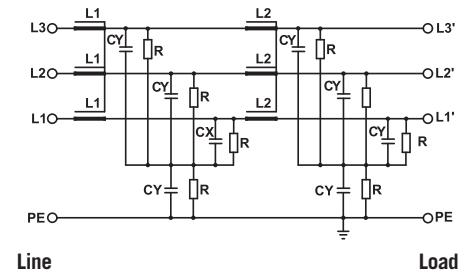
ELECTRIC CHARACTERISTICS

Nominal voltage	0/600 V _{Ac} - 50/60 Hz
Phase to phase test voltage	2700 V _{Dc} (2 s)
Phase to ground test voltage	3200 V _{Dc} (2 s)
Climatic class	- 40 / +85 °C

RoHS

FIN1700IT	Rated Current 40°C (50°C)	Cy (nF) ± 5%	L1 (mH) ± 10%	L2 (mH) ± 10%	Power Loss (W)
.006.M	8 (6)	100	1.5	1.5	8
.012.M	14 (12)	100	1.5	1.5	10
.016.M	18 (16)	100	1.4	1.4	12
.025.M	28 (25)	100	1.3	1.3	15
.032.M	35 (32)	100	1.2	1.2	23
.042.M	50 (42)	100	1.1	1.1	32
.055.M	63 (55)	100	1.1	1.1	37
.070.M	80 (70)	100	1	1	52
.080.M	90 (80)	100	1	1	60
.100.M	110 (100)	100	0.9	0.9	92
.115.M	130 (115)	100	0.8	0.8	101
.150.M	175 (150)	100	0.7	0.7	115
.200.M	230 (200)	100	0.6	0.6	120

ELECTRIC DIAGRAM



Models available with current ratings up to 2500A

Total leakage current at 230 V phase to ground 50 Hz / 40°C

Nominal <1mA
Worst condition <3mA

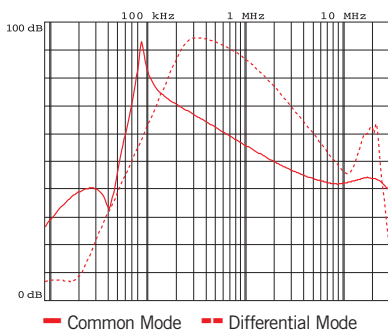
MECHANICAL DIMENSIONS (mm)

FIN1700IT	A	B	V	V1	F	H	I	L	N	d	Weight Kg
.006.M	140	50	19	15	6	226	200	7	28	M6	1.7
.012.M	140	50	19	15	6	226	200	7	28	M6	1.7
.016.M	177	60	19	15	6	267	237	8	34	M6	1.7
.025.M	177	60	19	15	6	267	237	8	34	M6	2.3
.032.M	177	60	19	15	6	267	237	8	34	M6	2.3
.042.M	177	70	19	25	6	295	265	8	44	M6	3.4
.055.M	177	70	19	33	6	295	265	8	44	M6	3.5
.070.M	205	80	28	38	8	390	340	12	53	M10	6
.080.M	205	80	28	38	8	390	340	12	53	M10	6
.100.M	205	80	28	43	8	390	340	12	53	M10	7.1
.115.M	205	80	28	43	8	390	340	12	53	M10	7.1
.150.M	220	105	28	50	8	420	370	12	78	M10	8.5
.200.M	220	105	28	50	8	420	370	12	78	M10	8.5

CONNECTION

Rigid Cable (mm ²)	Flexible Cable (mm ²)	Torque (Nm)
0.2 - 10	0.2 - 6	1.2
0.2 - 10	0.2 - 6	1.2
0.2 - 10	0.2 - 6	1.2
0.2 - 10	0.2 - 6	1.2
0.2 - 10	0.2 - 6	1.2
0.5 - 16	0.5 - 10	1.8
0.5 - 16	0.5 - 10	1.8
4 - 25	6 - 35	4.5
4 - 25	6 - 35	4.5
10 - 50	10 - 50	4
10 - 50	10 - 50	4
35 - 95	35 - 95	20
35 - 95	35 - 95	20

TYPICAL ATTENUATION



CASE

