



### ELECTRIC CHARACTERISTICS

Nominal voltage	0/600 V <sub>Ac</sub> - 50/60 Hz
Phase to phase test voltage	2400 V <sub>Dc</sub> (2 s)
Phase to ground test voltage	3200 V <sub>Dc</sub> (2 s)
Climatic class	- 40 / +85 °C

RoHS

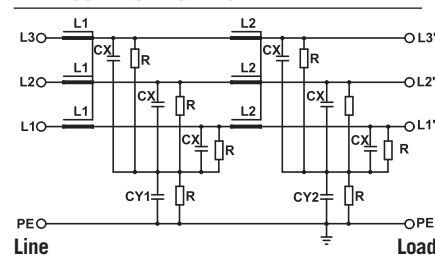
UL1283  
CSA C22.2  
E215863

FIN1700 FIN1700G	Rated Current 40°C (50°C)	ΣCx (μF) ± 5%	Cy1 (nF) ± 5%	Cy2 (nF) ± 5%	L1 (mH) ± 10%	L2 (mH) ± 10%	Power Loss (W)
.006.M	8 (6)	20	100	100	1.5	1.5	8
.012.M	14 (12)	20	100	100	1.5	1.5	10
.016.M	18 (16)	60	100	100	1.4	1.4	12
.025.M	28 (25)	60	100	100	1.3	1.3	15
.032.M	35 (32)	60	100	100	1.2	1.2	23
.042.M	50 (42)	60	100	100	1.1	1.1	32
.055.M	63 (55)	60	100	100	1.1	1.1	37
.070.M	80 (70)	60	100	100	1	1	52
.080.M	90 (80)	60	100	100	1	1	60
.100.M	110 (100)	60	100	100	0.9	0.9	92
.115.M	130 (115)	60	100	100	0.8	0.8	101
.150.M	175 (150)	60	100	100	0.7	0.7	115
.200.M	230 (200)	60	100	100	0.6	0.7	120

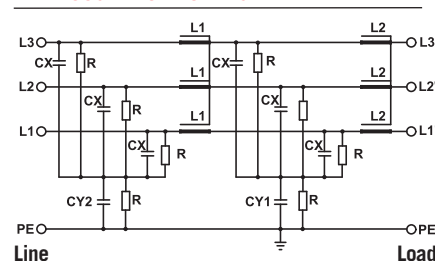
Total leakage current at 230 V phase to ground 50 Hz / 40°C

Nominal <3mA  
Worst condition <15mA

### FIN1700 ELECTRIC DIAGRAM



### FIN1700G ELECTRIC DIAGRAM



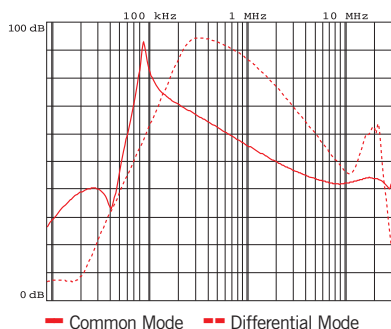
### MECHANICAL DIMENSIONS (mm)

FIN1700 FIN1700G	A	B	V	V1	F	H	I	L	N	d	Weight Kg
.006.M	140	50	19	15	6	226	200	7	28	M6	1.7
.012.M	140	50	19	15	6	226	200	7	28	M6	1.7
.016.M	177	60	19	15	6	267	237	8	34	M6	1.7
.025.M	177	60	19	15	6	267	237	8	34	M6	2.3
.032.M	177	60	19	15	6	267	237	8	34	M6	2.3
.042.M	177	70	19	25	6	295	265	8	44	M6	3.4
.055.M	177	70	19	33	6	295	265	8	44	M6	3.5
.070.M	205	80	28	38	8	390	340	12	53	M10	6
.080.M	205	80	28	38	8	390	340	12	53	M10	6
.100.M	205	80	28	43	8	390	340	12	53	M10	7.1
.115.M	205	80	28	43	8	390	340	12	53	M10	7.1
.150.M	220	105	28	50	8	420	370	12	78	M10	8.5
.200.M	220	105	28	50	8	420	370	12	78	M10	8.5

### CONNECTION

Rigid Cable (mm <sup>2</sup> )	Flexible Cable (mm <sup>2</sup> )	Torque (Nm)
0.2 - 10	0.2 - 6	1.2
0.2 - 10	0.2 - 6	1.2
0.2 - 10	0.2 - 6	1.2
0.2 - 10	0.2 - 6	1.2
0.2 - 10	0.2 - 6	1.2
0.5 - 16	0.5 - 10	1.8
0.5 - 16	0.5 - 10	1.8
4 - 25	6 - 35	4.5
4 - 25	6 - 35	4.5
10 - 50	10 - 50	4
10 - 50	10 - 50	4
35 - 95	35 - 95	20
35 - 95	35 - 95	20

### TYPICAL ATTENUATION



### CASE

