



ELECTRIC CHARACTERISTICS

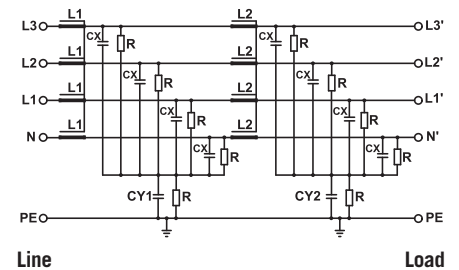
Nominal voltage	0/600 V _{Ac} - 50/60 Hz
Phase to phase test voltage	2400 V _{Dc} (2 s)
Phase to ground test voltage	3200 V _{Dc} (2 s)
Climatic class	- 40 / +85 °C

RoHS

UL1283
CSA C22.2
E215863

FIN1740	Rated Current 40°C (50°C)	Σ C _x (μF) ± 5%	C _{y1} (nF) ± 5%	C _{y2} (nF) ± 5%	L1 (mH) ± 10%	L2 (mH) ± 10%	Power Loss (W)
.006.M	8 (6)	24	100	100	1.5	1.5	8
.012.M	14 (12)	24	100	100	1.5	1.5	10
.016.M	18 (16)	80	100	100	1.4	1.4	12
.025.M	28 (25)	80	100	100	1.3	1.3	15
.032.M	35 (32)	80	100	100	1.2	1.2	23
.042.M	50 (42)	80	100	100	1.1	1.1	32
.055.M	63 (55)	80	100	100	1.1	1.1	37
.070.M	80 (70)	80	100	100	1	1	52
.080.M	90 (80)	80	100	100	1	1	60
.100.M	110 (100)	80	100	100	0.9	0.9	92
.115.M	130 (115)	80	100	100	0.8	0.8	101
.150.M	175 (150)	80	100	100	0.7	0.7	115
.200.M	230 (200)	80	100	100	0.6	0.6	120

ELECTRIC DIAGRAM



Total leakage current at 230 V phase to ground 50 Hz / 40°C
Nominal <3mA
Worst condition <15mA

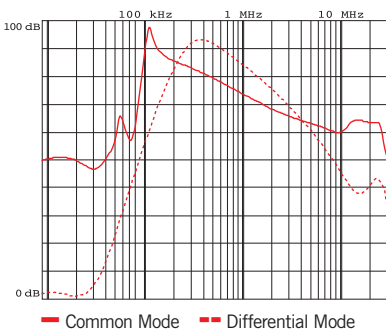
MECHANICAL DIMENSIONS (mm)

FIN1740	A	B	V	V1	F	H	I	L	N	d	Weight Kg
.006.M	140	60	19	16	6	226	200	7	38	M6	1.9
.012.M	140	60	19	16	6	226	200	7	38	M6	1.9
.016.M	177	70	19	16	6	267	237	8	44	M6	1.9
.025.M	177	70	19	16	6	267	237	8	44	M6	2.5
.032.M	177	70	19	16	6	267	237	8	44	M6	2.5
.042.M	177	80	19	34	6	295	265	8	54	M6	3.7
.055.M	177	80	19	33	6	295	265	8	54	M6	3.9
.070.M	205	100	28.5	38	8	390	340	12	73	M10	6.2
.080.M	205	100	28.5	38	8	390	340	12	73	M10	6.2
.100.M	205	100	28.5	43	8	390	340	12	73	M10	7.5
.115.M	205	100	28.5	43	8	390	340	12	73	M10	7.5
.150.M	220	130	28.5	50	8	420	370	12	103	M10	9.4
.200.M	220	130	28.5	50	8	420	370	12	103	M10	9.4

CONNECTION

Rigid Cable (mm ²)	Flexible Cable (mm ²)	Torque (Nm)
0.2 - 10	0.2 - 6	1.2
0.2 - 10	0.2 - 6	1.2
0.2 - 10	0.2 - 6	1.2
0.2 - 10	0.2 - 6	1.2
0.2 - 10	0.2 - 6	1.2
0.2 - 10	0.2 - 6	1.2
0.5 - 16	0.5 - 10	1.8
0.5 - 16	0.5 - 10	1.8
4 - 25	6 - 35	4.5
4 - 25	6 - 35	4.5
10 - 50	10 - 50	4
10 - 50	10 - 50	4
35 - 95	35 - 95	20
35 - 95	35 - 95	20

TYPICAL ATTENUATION



CASE

