



ELECTRIC CHARACTERISTICS

Nominal voltage	0/500 V _{Ac} - 50/60 Hz
Phase to phase test voltage	2300 V _{Dc} (2 s)
Phase to ground test voltage	3100 V _{Dc} (2 s)
Climatic class	- 40 / +85 °C

RoHS

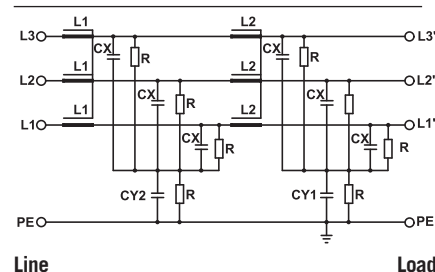
UL1283
CSA C22.2
E215863

FIN1900E FIN1900EG	Rated Current 40°C (50°C)	ΣCx (μF) ± 5%	Cy1 (nF) ± 5%	Cy2 (nF) ± 5%	L1 (mH) ± 10%	L2 (mH) ± 10%	Power Loss (W)
.007.M	7 (6)	20	1000	100	1.5	1.5	8
.013.M	13 (12)	20	1000	100	1.5	1.5	12
.018.M	18 (16)	20	1000	100	1.4	1.4	15
.027.M	27 (25)	20	1000	100	1.3	1.3	20
.034.M	34 (32)	20	1000	100	1.2	1.2	32
.040.M	40 (36)	20	1000	100	1.1	1.1	23
.055.M	55 (50)	20	1000	100	1.1	1.1	42
.070.M	70 (64)	20	1000	100	1	1	55
.100.M	100 (90)	20	1000	100	1	1	60
.110.M	110 (100)	20	1000	100	0.9	0.9	90
.130.M	130 (120)	20	1000	100	0.8	0.8	98
.150.M	150 (135)	20	1000	100	0.7	0.7	103
.200.M	200 (180)	20	1000	100	0.7	0.7	115
.230.M	230 (210)	20	1000	100	0.6	0.6	120

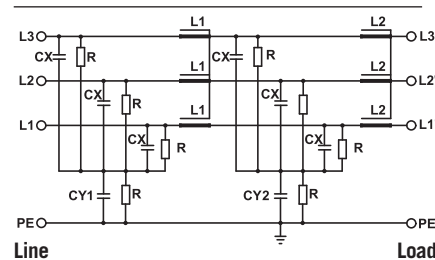
Total leakage current at 230 V phase to ground 50 Hz / 40°C

Nominal <10mA
Worst condition <80mA

FIN1900E ELECTRIC DIAGRAM



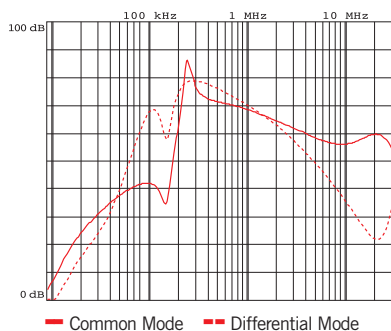
FIN1900EG ELECTRIC DIAGRAM



MECHANICAL DIMENSIONS (mm)

FIN1900E FIN1900EG	A	B	V	V1	F	H	I	L	N	d	Weight Kg
.007.M	140	50	19	15	6	226	200	7	28	M6	1.7
.013.M	140	50	19	15	6	226	200	7	28	M6	1.7
.018.M	140	50	19	15	6	226	200	7	28	M6	1.7
.027.M	140	50	19	15	6	226	200	7	28	M6	1.7
.034.M	140	50	19	15	6	226	200	7	28	M6	1.7
.040.M	140	50	19	15	6	226	200	7	28	M6	1.7
.055.M	177	70	19	25	6	295	265	8	44	M6	3.7
.070.M	177	70	19	33	6	295	265	8	44	M6	5.2
.100.M	205	80	28.5	38	8	390	340	12	53	M10	6.5
.110.M	205	80	28.5	38	8	390	340	12	53	M10	6.5
.130.M	205	80	28.5	43	8	390	340	12	53	M10	7.1
.150.M	205	80	28.5	43	8	390	340	12	53	M10	7.1
.200.M	220	105	28.5	50	8	420	370	12	78	M10	8
.230.M	220	105	28.5	50	8	420	370	12	78	M10	8

TYPICAL ATTENUATION



CONNECTION

Rigid Cable (mm ²)	Flexible Cable (mm ²)	Torque (Nm)
0.2 - 10	0.2 - 6	1.2
0.2 - 10	0.2 - 6	1.2
0.2 - 10	0.2 - 6	1.2
0.2 - 10	0.2 - 6	1.2
0.2 - 10	0.2 - 6	1.2
0.2 - 10	0.2 - 6	1.2
0.5 - 16	0.5 - 10	1.8
0.5 - 16	0.5 - 10	1.8
4 - 25	6 - 35	4.5
4 - 25	6 - 35	4.5
10 - 50	10 - 50	4
10 - 50	10 - 50	4
35 - 95	35 - 95	20
35 - 95	35 - 95	20

CASE

