



ELECTRIC CHARACTERISTICS

Nominal voltage	0/480 V _{Ac} - 50/60 Hz
Phase to phase test voltage	2200 V _{Dc} (2 s)
Phase to ground test voltage	2900 V _{Dc} (2 s)
Climatic class	- 40 / +85 °C

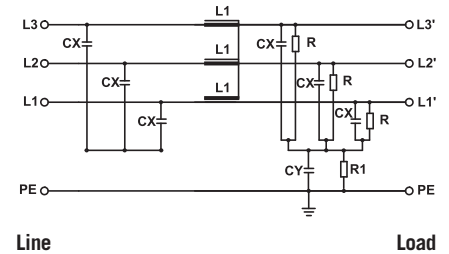
RoHS



FIN3755	Nominal Current (A)		ΣC_x (μF) ±10%	C_y (nF) ±10%	L (mH) ±10%	Power Loss (W)
	TA=40°C	TA=50°C				
.007.M	8	7	9	470	2.7	3
.016.M	18	16	9	470	2.1	4
.030.M	32	30	9	470	1.9	11
.042.M	45	42	9	470	1.6	15
.055.M	58	55	9	470	1.4	19
.075.M	80	75	9	470	1.2	25
.100.M	105	100	9	470	1.1	42

Total leakage current at 230 V phase to ground 50 Hz / 40°C
 Nominal <10mA
 Worst condition <80mA

ELECTRIC DIAGRAM



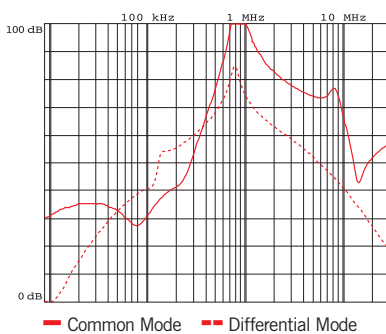
MECHANICAL DIMENSIONS (mm)

FIN3755	A	B	C	D	E	F	G	H	I	Weight Kg
.007.M	160	180	190	78	48	20	4	M5	1	1.1
.016.M	220	235	250	85	48	25	5	M5	1	1.5
.030.M	240	255	270	85	50	30	5	M6	1	2.1
.042.M	280	295	310	85	50	30	5	M6	1	2.7
.055.M	220	235	250	100	90	60	5	M6	1	3.1
.075.M	240	255	270	135	85	60	5	M6	1.5	3.6
.100.M	240	255	270	155	90	65	6	M10	1.5	4.2

CONNECTION

Rigid Cable (mm ²)	Flexible Cable (mm ²)	Torque (Nm)
0.2 - 4	0.2 - 4	0.5
0.2 - 4	0.2 - 4	0.5
0.2 - 10	0.2 - 6	1.2
0.2 - 10	0.2 - 6	1.2
0.5 - 16	0.5 - 10	1.8
4 - 25	6 - 35	4.5
4 - 25	6 - 35	4.5

TYPICAL ATTENUATION



CASE

