



ELECTRIC CHARACTERISTICS

Nominal voltage	0/480 V _{AC} - 50/60 Hz
Phase to phase test voltage	2200 V _{DC} (2 s)
Phase to ground test voltage	2900 V _{DC} (2 s)
Climatic class	- 40 / +85 °C

RoHS

FIN538	Rated Current 40°C (50°C)	ΣC_x (μF) $\pm 5\%$	C_y (nF) $\pm 5\%$	L1 (mH) $\pm 5\%$	Power Loss (W)
.005.M	8 (6)	20	1000	1.5	8
.010.M	14 (12)	20	1000	1.5	10
.016.M	18 (16)	20	1000	1.4	12
.025.M	28 (25)	20	1000	1.3	15
.030.M	35 (32)	20	1000	1.2	23

Total leakage current at 230 V phase to ground 50 Hz / 40°C Nominal <10mA
Worst condition <80mA

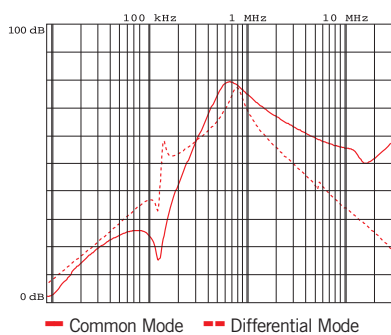
MECHANICAL DIMENSIONS (mm)

FIN538	L	d	E	I	P	A	C	T	G	F	H	Weight Kg
.005.M	59	4.5	10	35	130	112	166	4	37.5	7	146	1.15
.010.M	59	4.5	10	35	130	112	166	4	37.5	7	146	1.15
.016.M	59	4.5	10	35	130	112	166	4	37.5	7	146	1.15
.025.M	59	4.5	10	35	130	112	166	4	37.5	7	146	1.15
.030.M	59	4.5	10	35	130	112	166	4	37.5	7	146	1.15

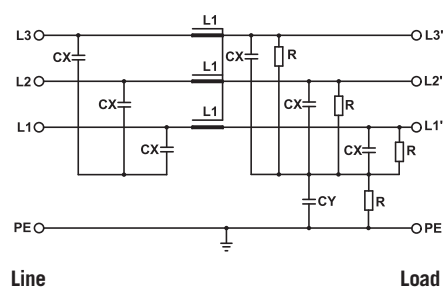
CONNECTION

Rigid Cable (mm ²)	Flexible Cable (mm ²)	Torque (Nm)
1 - 4	1 - 4	1.8
1 - 4	1 - 4	1.8
1 - 4	1 - 4	1.8
1 - 4	1 - 4	1.8
1 - 4	1 - 4	1.8

TYPICAL ATTENUATION



ELECTRIC DIAGRAM



CASE

